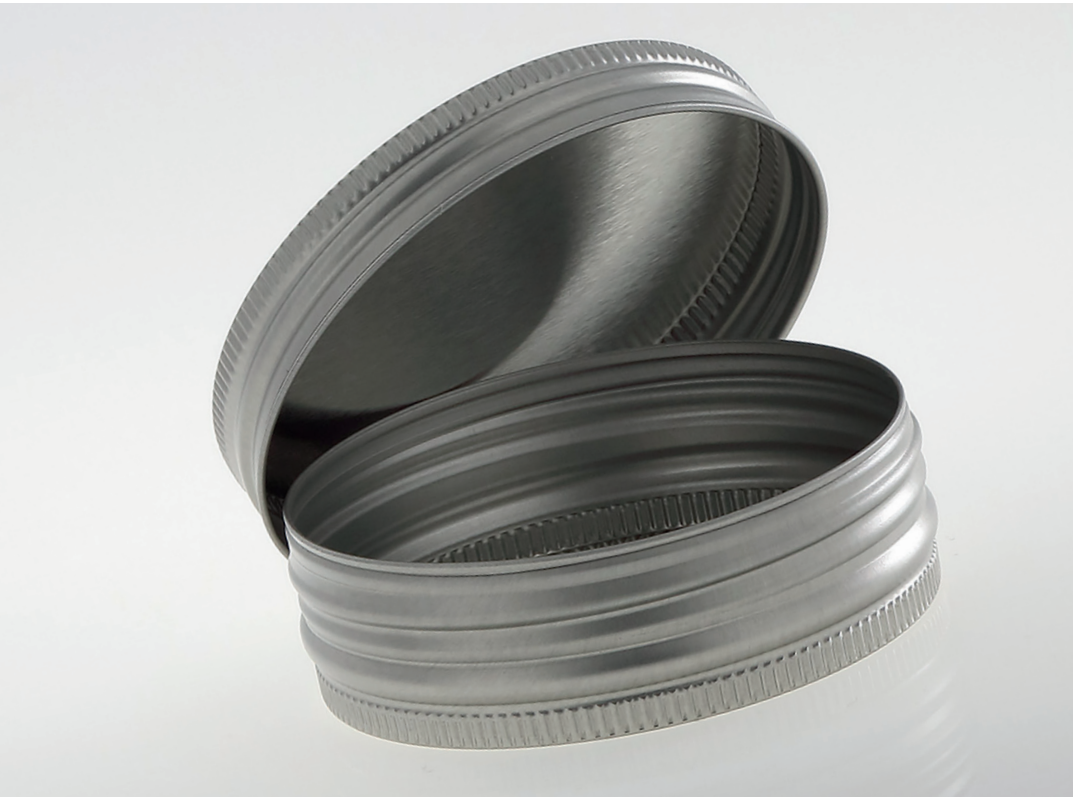




Screw-cap tins



If anyone CAN - we CAN!

Screw-cap tins

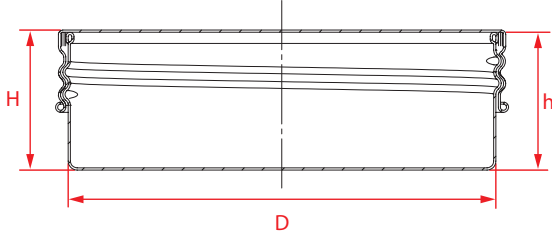
The versatile metal packaging

The benefits of screw-cap tins
„made by Pirlo“ at a glance:

- Finishing with printing and embossing is possible
- Optimal residual emptying due to a large can opening

Talk to us about your individual packaging requirements - we will also find the ideal metal packaging for your products.
Special tin sizes are possible on request.



Standard sizes								
								
Volume (brim-full)	Dimension	Base height	Quantity per pallet (height 1,8m)		Material		Lid types	Minimum amount
			Base	Lid	Tinplate	Aluminum		
11	36/13	12	90.000	108.000		●		70.000
15	40/14	13	68.400	108.000	○			80.000
26	48/16	15	36.000	61.200		●		50.000
36	52/19	18	27.000	46.800	●			50.000
38	51/20	19	23.400	39.600		●	with EPE-liner	30.000
46	60/16	14	23.400	32.400	●		with inspection window	30.000
54	56/24	23	18.000	39.600		●	with EPE-liner	30.000
66	65/21	20	15.480	25.200	●			30.000
66	67/22	21	12.000	24.000		●	with EPE-Liner	30.000
98	76/24	23	10.800	18.000	●		with compound	25.000
100	75/25	24	10.800	18.000		●	with EPE-liner	25.000
125	83/27	26	7.200	16.800		●	with EPE-Liner	25.000
183	76/37	36	6.000	18.000	●		with compound	25.000

Legend

- = Standard (samples available)
- = Special sizes, samples and minimum quantities on request
- = Stock items (grey) also in smaller quantities available



Österreichische Blechwarenfabrik
Pirlo GmbH & Co KG

Hugo-Petters-Straße 8-14, 6330 Kufstein/Austria
fon +43 5372 649 23
office@pirlo.com pirlo.com

